

<sup>1</sup> All photographs and scans Robert W Fletcher  
<sup>2</sup> Greenlaw, L, *Mary George of Allnorthover*, (London: Flamingo, 2001), p47  
<sup>3</sup> Greenlaw, L, *Mary George of Allnorthover*, p287

Carefully turn left on to the main road and proceed up into Stock village, going past the church and it's green on your right and down Stock Road to the junction with Mill Road which you take on the right. Cycle down Mill Road through the main housing of Stock village to the junction with Downham Road. Turn right towards Wickford and go downhill through the cottages on each side to the junction with Dowsett Lane on the right going to Ramsden Heath. Turn left here towards Hanningfield and Wickford. Past Whitehills Farm and round the right bend and up on to the run down to the straight road at the smaller dam end of Hanningfield Reservoir's SW corner, passing Fremnells and Crowsheath Farm.

"Hive Lane was a dark tunnel grown over by hedgerows and trees, but when Mary turned into it that morning, it was crammed with white"<sup>3</sup>

Wild Valley, February 2013<sup>1</sup>  
 Buttsbury Church overlooking the



From Ingatestone Market Place proceed up the High Street in a NE direction towards Margareting and Chelmsford, turning right at the crossroads to take Stock Lane with the pub/bar on the corner. Proceed out of the village, over the railway and past the Sewage Works on the right and over the old humped backed bridge that spans the River Wild and on up the hill to Buttsbury Church on your right.

"The hillock that lay just beyond the fence of the High School's playing fields was a prehistoric burial mound, hemmed in by housing estates"<sup>2</sup>



## THE RIDE



## Ingatestone Pedallers Social Cycling Group

# "MARY GEORGE RESERVOIR CIRCLE"

## CYCLE RIDE



**MAPS:** OS: Landranger 167- Chelmsford, Harlow & Bishop's Stortford, Explorer 175 - Southend on Sea & Basildon; Sustrans Cycle Maps: Essex & the Thames Estuary Cycle Map

**START & FINISH:** Ingatestone Market Place, grid ref TQ649994

**FURTHEST POINT IN THE RIDE:** Hanningfield Reservoir works on Middlemead between West and South Hanningfield, grid ref TQ746985



Sunset view of Hanningfield Reservoir, July 2017

<sup>4</sup> Greenlaw, L, *The Importance of Music to Girls*, (London: Faber & Faber, 2007), p88  
<sup>5</sup> Greenlaw, L, *Mary George of Allnorthover*, p12

"From up here, she could see the bleached concrete rim that ran along that side of the reservoir's basin. The water was hard to get to. A chain-link fence ran around most of the perimeter..."<sup>5</sup>



"Hanningfield-on-Sea" shows itself at an Essex youth fishing match, June 2010

Leaving the Fishing Lodge you proceed on to the turning on the left, Middlemead, which takes the road along the main NE dam end of the reservoir, past the water works and up into West Hanningfield village. This is the furthest point in the ride from Ingatestone.

There is also a picnic field to the right by the car parking. Here you can relax and buy refreshments at the *Cafe on the Water*.

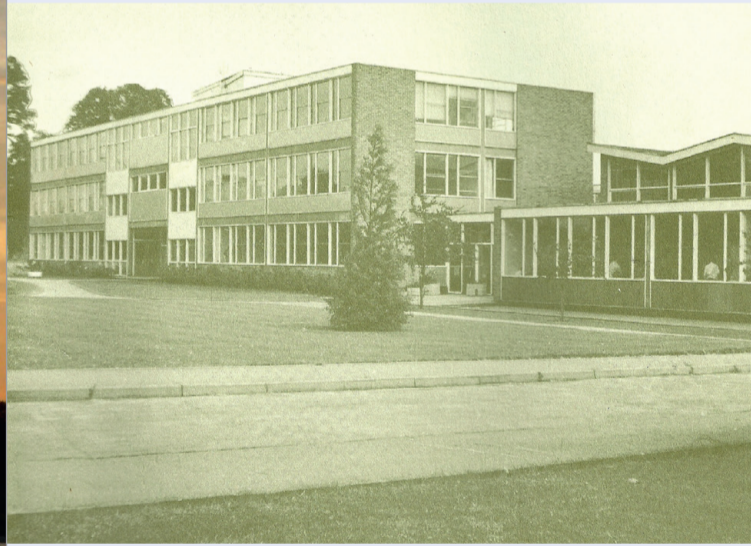
Carry on over the reservoir on the Hawkwood Road, past the Essex Wildlife Trust Visitor Centre on your left, which is worth a visit for its waterside wildlife, take the road on the left to South Hanningfield and the E&S Water Fishing Lodge which is down the small lane on the left just before you reach South Hanningfield at the Old Windmill PH.

The Fishing Lodge and cafe at Hanningfield Reservoir from the groyne in Lodge Bay, June 2010



"These boys learnt to drive when they were about twelve, in someone's field or along the one straight road out by the reservoir"<sup>4</sup>

"That September I started secondary school. It was a new school injected into the grounds of a failing secondary modern, an 'Anglo-European' school in a brief era of European fervour"<sup>6</sup>



Ingatestone Secondary School Ingazette magazine cover-1969 to 1971

<sup>6</sup> Greenlaw, L, *The Importance of Music to Girls*, p49



ROBERT W FLETCHER  
 rfletcher189@gmail.com  
 Ingatestone, Essex

Published: May 2021 | Design: Silvery Fox Design silveryfox141@gmail.com



One of the stones on the junction of High Street and Fryerning Lane/ Stock Lane, Ingatestone, August 2012



From the church you bear right and back over the Wild bridge in Stock lane and up again to the junction with the High Street and left back to Market Place. If you so wish, you can return to Ingatestone on a longer, more scenic route by turning left at the church, going through Buttsbury, over the Wash and turning right via Padarnams Green Road and Hall Lane, past Ingatestone Hall and over the railway crossing back to the High Street at its SW end. You then simply turn right and back to the Market Place and your starting point.

View from the tower window in Buttsbury Church towards Ingatestone, January 2013



Turn left at the junction at the top of Middlemead in West Hanningfield and go down to the Compasses PH on the left where you take the left turning, Lower Stock Road, back towards Stock village. This lane proceeds for a mile and a half up to the junction with Downham Road by Holes Place Farm, where you turn left to Stock. Proceed uphill for a short distance and take Mill Lane on the right into Stock village where it meets Mill Road. Here you turn right and go back in reverse to the junction with Stock Road, the B1007, turning left to travel back through the village, its church and downhill to the turning on the right to Honeyput Lane, taking great care here when you cross on the bend across the oncoming traffic from Billerica.

When you reach the junction with Ingatestone Road again at the bottom of Honeyput Lane you now return the way you came to Buttsbury Church.

The ride is approximately 16 miles and the loop has taken you around the setting for places fictionalised in the novel *Mary George of Allnorthover* by the writer Lavinia Greenlaw (b.1962).

### READING LIST:






- Greenlaw, L, *Mary George of Allnorthover*, (London: Flamingo, 2001)
- Greenlaw, L, *The Importance of Music to Girls*, (London: Faber & Faber, 2007)
- (There are also four collections of poetry published to June 2013)

### WEB SITES:

- <http://www.faber.co.uk/catalog/author/lavinia-greenlaw>
- <http://www.lavinia-greenlaw.org/>
- <http://www.poetryarchive.org/poetryarchive/singlePoet.do?poetId=6167>
- <https://twitter.com/LaviniaGreenlaw>
- <http://www.uea.ac.uk/literature/People/Lavinia+Greenlaw>
- [http://en.wikipedia.org/wiki/Lavinia\\_Greenlaw](http://en.wikipedia.org/wiki/Lavinia_Greenlaw)

Sunset view of Hanningfield Reservoir, July 2017

# "MARY GEORGE RESERVOIR CIRCLE" CYCLE RIDE

-  Cycle route
-  Extension to cycle route
-  NCN - National Cycle Network
-  Landmark / place of interest
-  Public house / restaurant

**START & FINISH**  
Ingatestone Market Place

