

9. Rangers Gate: Great Park Rules

Just inside Rangers Gate, you'll see a notice board with park regulations.



- Name 2 things you are **not** allowed to do
- Name 1 thing you need permission to do
- Is there anything funny about the name at the end?
- At the gate, there's a sign warning about ticks, a relative of the spider. If you find one on you, what's the best way to remove it?

10. People in the Great Park

Many of the people who live in the Village work in the Great Park. On a bench near the Post Office, there's a plaque commemorating a couple served the Great Park for 40 years.

- Who were they?

11. Which local attraction attracts most visitors each year?

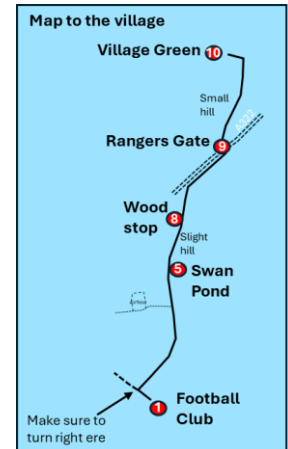
You'll know of three major visitor attractions in Windsor: Legoland, Windsor Castle & Windsor Great Park.

- Which one attracts the most visitors, & how many each year?

12. Living in the Village

- When was the Village Post Office built?
- Across the road from the green, there's a large playing field. What sport is played there?

Pedal To The Park



As you ride to the Village, through Stag Meadow, we've some facts about the Great Park & some questions for you to answer. Look out for birds, flowers & fruit along the way.

**Answers can be found at our stall on the Village Green.
Hand this sheet in for a chance to WIN a prize in our draw!**

Child's First Name:

Parent / Guardian's Name & mobile no.:

Windsor Cycle Hub volunteers, in orange gilets, are along the route to assist with riding & anything else – if you need it.

Windsor Great Park is 20 sq. Km in area (2,857 football pitches). Stag Meadow is named after the deer that once roamed there. More recently it's hosted military camps, plus international Scout & Guide jamborees.

After Rangers Gate, in the main park, you'll be on Prince Consort Drive, named after Queen Victoria's husband Prince Albert.

1. Football Pitch: just before we kick off the ride

a. Which new football team, has its ground in Stag Meadow?

2. Today's Cycle Path

You'll ride on a National Cycle route, part of the UK network. This route's 433 miles long, running from East London to West Wales. Look out for marker posts like this along the way.

a. What's the number of this route?



3. Flight Path: look out for planes

The Great Park is 7 miles from the UK's busiest airport – with 80 million passengers & 90 airlines per year. Aircraft flying east over the castle are at an altitude of 500m, doing 200 mph, just 2 minutes before landing.

a. What's the airport called?



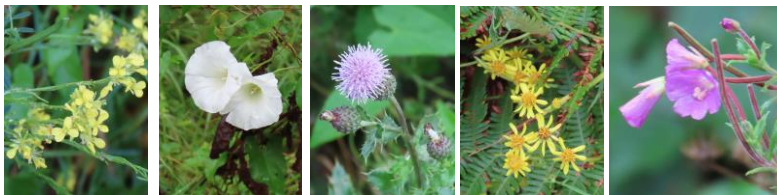
b. Which airlines have these tailplane designs?

A smaller airfield can be seen on your left along Stag Meadow. It's the home of Windsor Great Park Flying Association, with its own runway for model aircraft and a special area for kites.



4. Wildflowers: to look out for

a. Tick any of these you see. Do you know their names?



5. Swan Pond: on your way

As you start to ride uphill, you'll see Swan Pond, on the right, with its rushes. The stems can be woven to make mats, baskets, & chair seats. Look for dragonflies too, but don't get too close!



a. What's the common name given to the tall rushes?

6. Birds and butterflies: look up, down and around

a. Tick any of these birds or butterflies you see or hear. Can you name them? Did you see any others?



b. Not birds, but guess how many species of bat live in the park?

7. Fruit Loop: look out for these fruit, but do NOT PICK!

a. Tick the ones you see. Do you know what they are?



8. Tree Break: stop in the small wood at the top of the first hill

a. Can you collect a leaf from three different types of tree?
b. Can you name the trees they came from?
c. One of the trees here was once common in the USA but was devastated by blight last century. What is it?